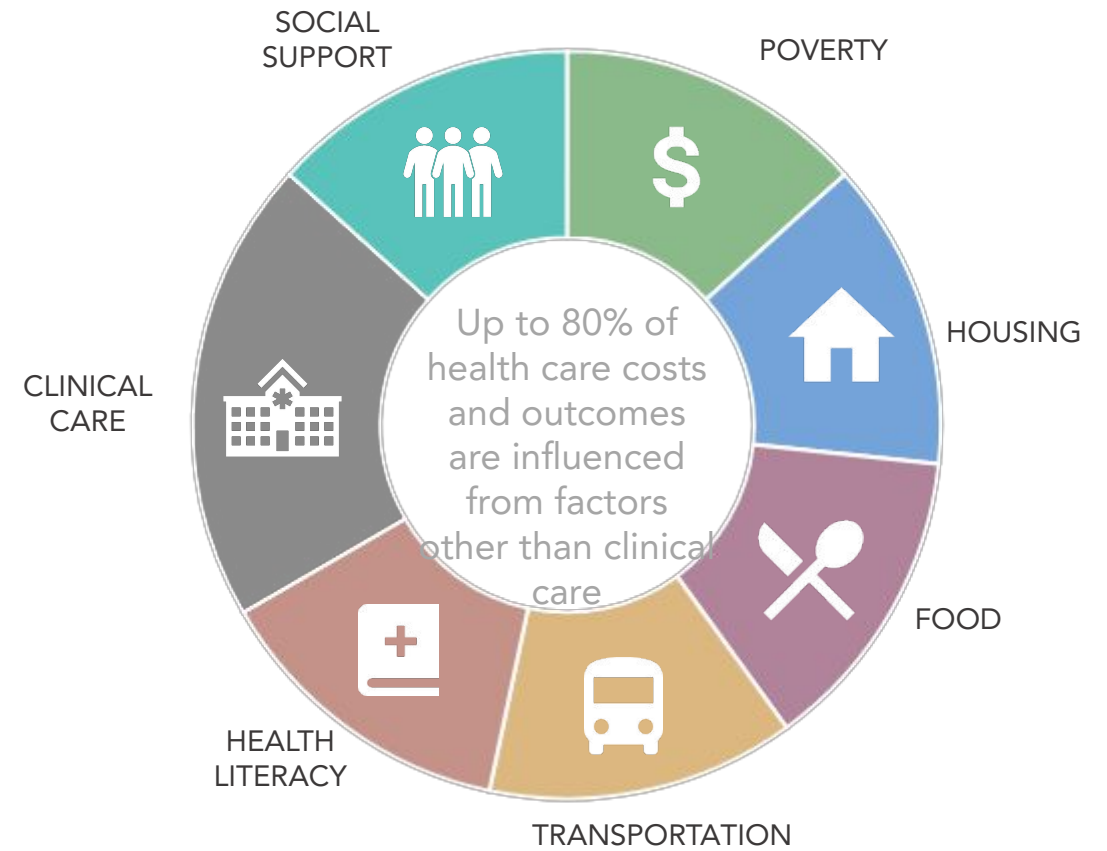
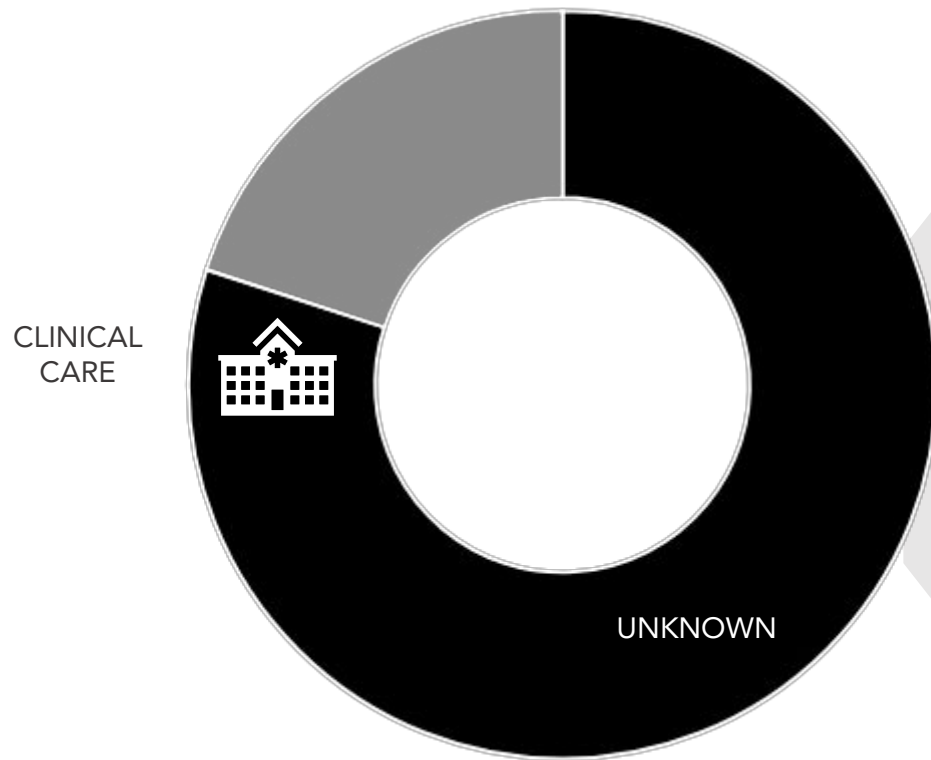
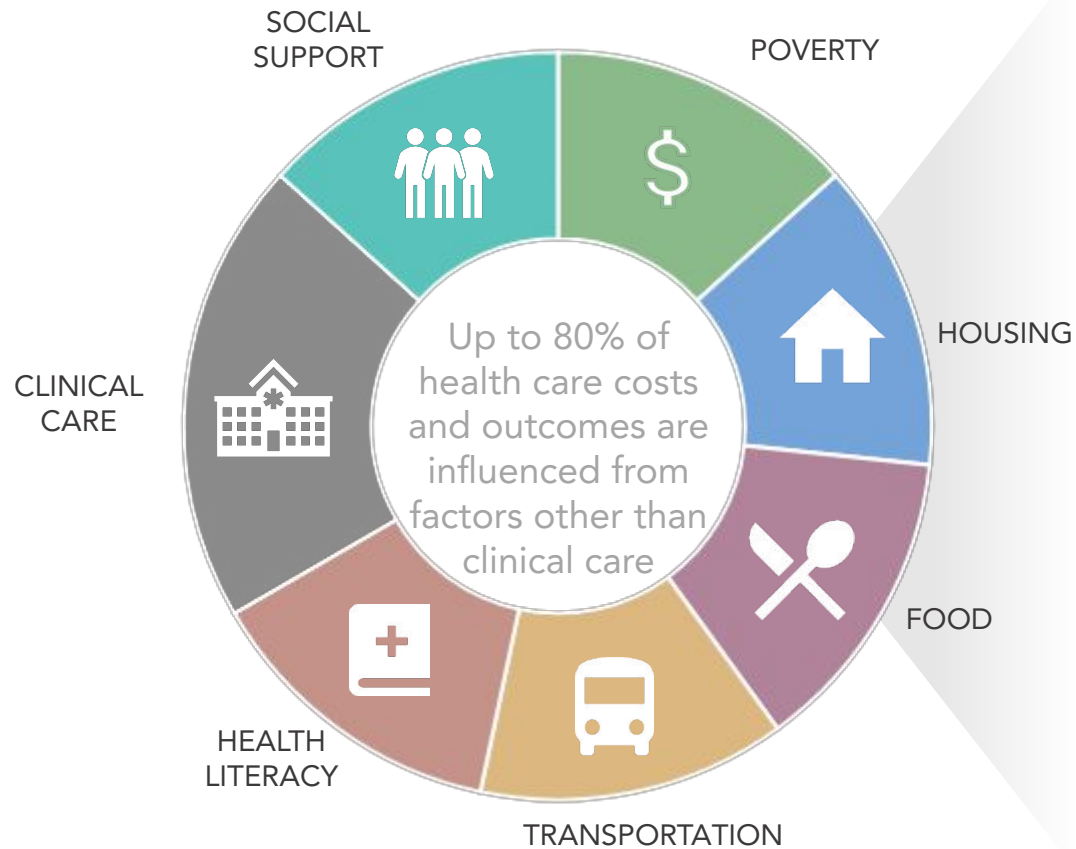


Why Social Determinants of Health Matter



SDOH Have a Measurable Impact on Health and Healthcare



People with annual **family incomes** of <\$35K are two to three times more likely to have a chronic disease or illness.

Lack of **adequate air conditioning systems** exacerbate heat-related illnesses; **mold, vermin, and other environmental contaminants** exacerbate pulmonary conditions.

Hospitals have found an increase in hypoglycemia admissions from lower-income patients in the last week of the month (when paychecks and **SNAP benefits** are likely to run out).

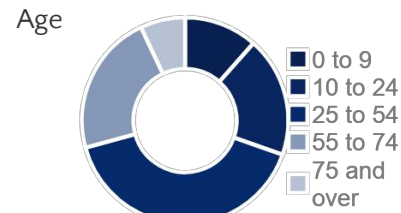
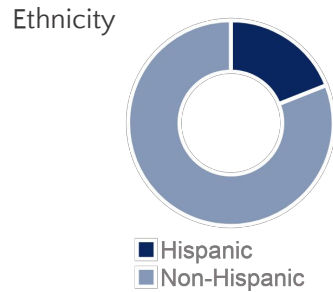
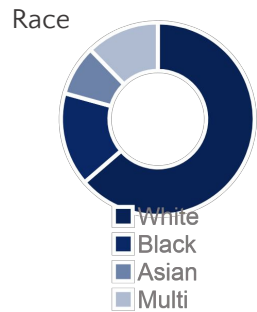
3.6M Americans miss or delay non-emergency medical care each year because of **transportation problems**.

People with **low health literacy** have a lower likelihood of getting flu shots, understanding medical labels and instructions, and a greater likelihood of taking medicines incorrectly.

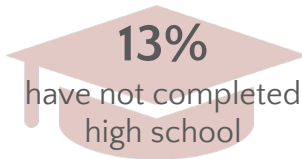
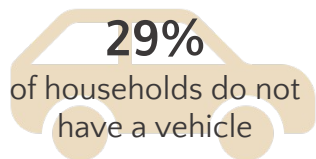
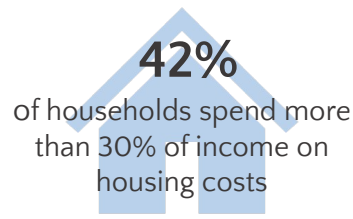
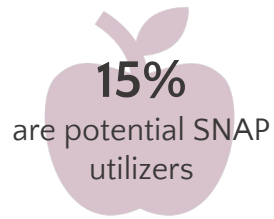
State of New York

Demographics

Total Population: **19.62 mil**



State Statistics



State Risk Exposure

